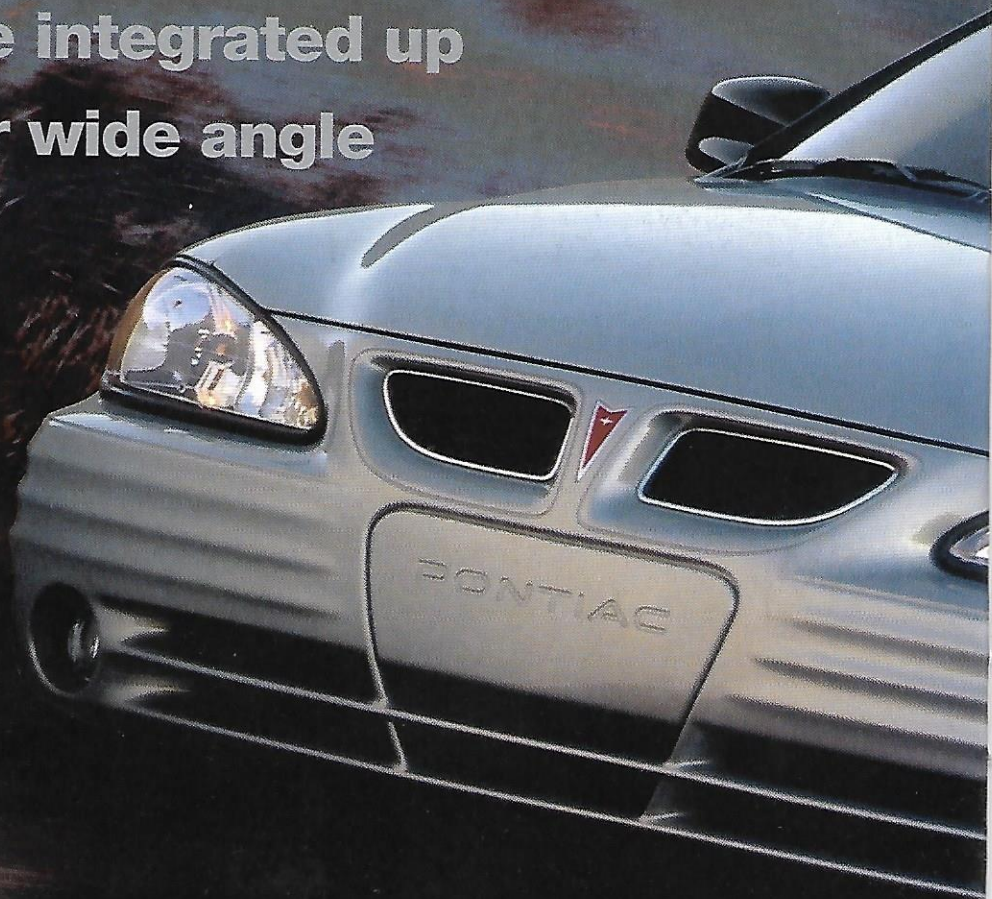


1999 PONTIAC
GRAND AM
EXCITEMENT
WELL BUILT



Solid St

There's a saying among designers:
"If it looks right, it probably is." From
any angle the all-new Grand Am's bold,
aggressive stance looks right. But what
makes it so? Could be the way the
standard fog lamps are integrated up
front to throw out their wide angle
beams. Could be the way
the wheels seem to push
out the corners of the car
to enhance road perfor-
mance. Or it could be the
way the rear spoiler chan-
nels air over the rear deck.
It could be all of the above.



ance.



Grand Am SE Sedan in Silvermist Metallic.



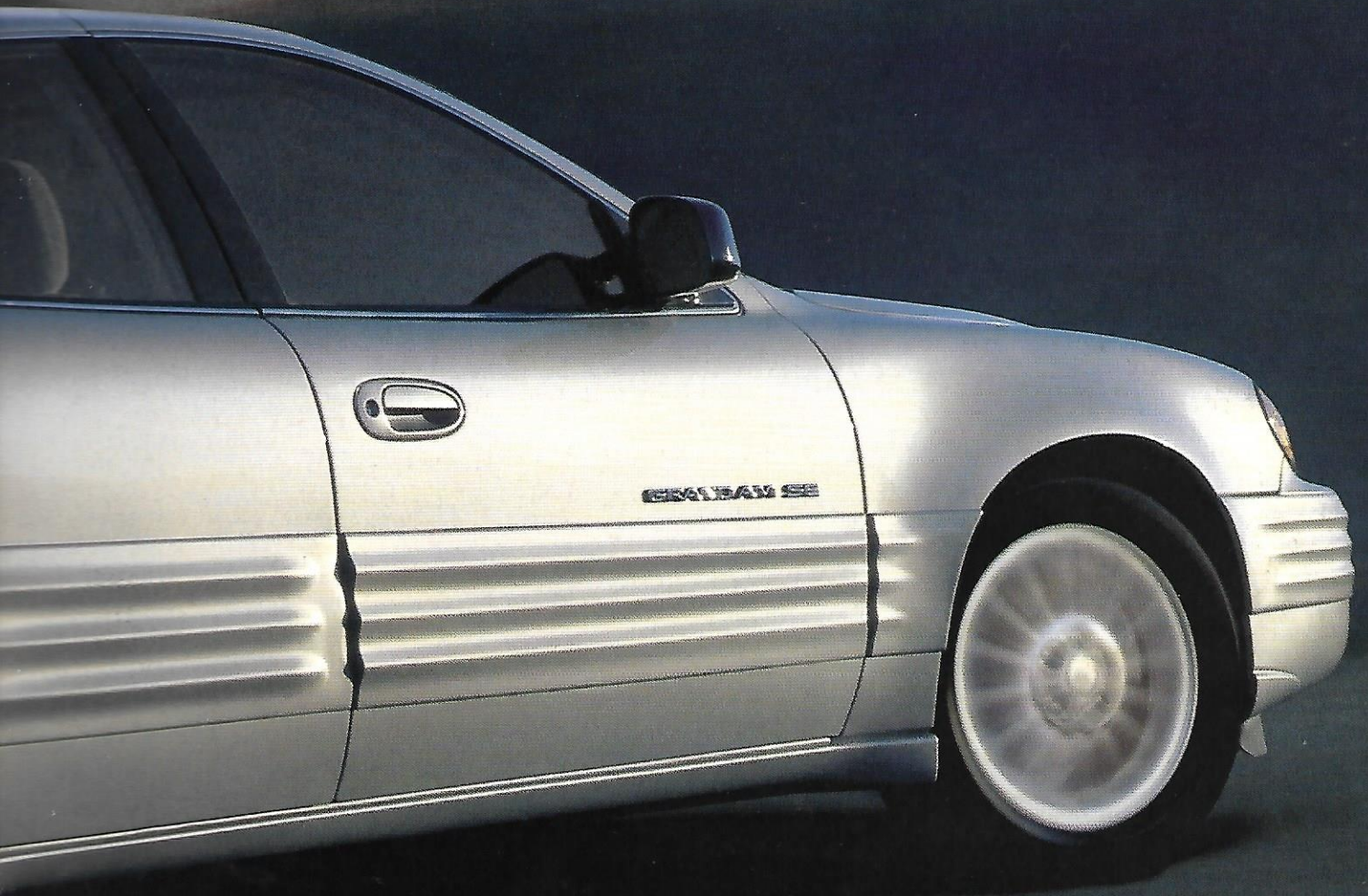


Photo shown with extra-cost options.

Solid Fe

Take the wheel and get a grip on the road. In the all-new Grand Am, it'll feel like a direct connection. The cockpit's gauges are larger and its ergonomic controls placed closer to the driver than those of any car in its class. This helps keep the driver linked to the experience, as do Grand Am's standard performance features like anti-lock brakes (ABS), automatic transmission with Enhanced Traction System and its all-new four-wheel independent suspension. Air conditioning, illuminated entry, automatic programmable power door locks, controlled-cycle windshield wipers and a Tilt-Wheel adjustable steering column combine to make Grand Am's standard content level the most generous in its class.

ah.







Photo shown with extra-cost options.

Everything about Grand Am:

PONTIAC CARES



	SE Coupe and Sedan		
	SE	SE1	SE2
Backs every 1999 Grand Am with the following services:			
3-year/36,000-mile, no deductible, bumper-to-bumper warranty	S	S	S
Roadside Assistance that provides in an emergency:			
Free lockout assistance	S	S	S
Free dead-battery assistance	S	S	S
Free out-of-fuel assistance	S	S	S
Free flat-tire change	S	S	S
Free towing for warranty repairs	S	S	S
Free Transportation	S	S	S

EXTERIOR FEATURES

Fixed mast	S	S	S
Soft fascia type with integral rub strips	S	S	S
Turning lamps (with automatic light control)	S	S	S
Multi-Ray tinted	S	S	S
Bumpers: Composite wraparound with reflector optics	S	S	S
fog lamps	S	S	S
Sport, LH remote, RH manual	S	-	-
Sport, LH and RH power remote	-	S	S
Paints, bodyside, wide body color	S	S	S
Turnering lamps	S	S	S
Rear deck lid	A	A	A
Steel-belted radial): P215/60R15 blackwall touring (QCD)	S	S	-
P225/50R16 blackwall, touring (QKQ)*	-	-	S
Compact spare	S	S	S
with low liftover design and trim protector	S	S	S
Wheel Covers:			
A SE-15" Custom bolt-on wheel covers (PG1)	S	-	-
B SE-15" 5-spoke (PF7)	-	S	-
C SE-16" Multi-spoke cast aluminum (PY0)	-	-	S
Windshield wipers: "Wet-arm"	S	S	S
Controlled-cycle	S	S	S

Wheels should not be used. They may cause damage. See Owner's Manual.



A



B



C

INTERIOR FEATURES

	SE Coupe and Sedan		
	SE	SE1	SE2
Acoustical insulation, extensive	S	S	S
Air Bags, Next Generation: Driver and front passenger*	S	S	S
Air conditioning	S	S	S
Ashtray and lighter element	A	A	A
Console, front floor with storage, coin holder and armrest	S	S	S
Cruise control	A	S	S
Deck lid release (electric)	S	S	S
Defogger, electric rear window	S	S	S
Door locks: Power, automatic with unlock/relock	S	S	S
Child resistant rear (Sedans only)	S	S	S
Fabric: Cartagena cloth interior	S	S	-
Redondo/Patina cloth (with Sport Interior Group)	-	-	S
Leather seating areas (available with Sport Interior Group)	-	-	A
Instrumentation: Analog speedometer, tachometer, fuel, coolant temperature and trip odometer	S	S	S
Keyless entry system, remote (requires power windows)	-	A	S
Lights: Automatic light control	S	S	S
Headlamp-on warning	S	S	S
Interior lamp group, includes trunk lighting	S	S	S
Illuminated entry with "theater" dimming	S	S	S
Mats, carpeted front and rear floor	S	S	S
Mirrors: Day/night rearview	S	S	S
Visor vanity, passenger	S	S	S
Power windows with driver's "express-down" feature	-	S	S
Radios: Delco ETR AM/FM stereo with seek up/down and clock (UM7)	S	-	-
Delco ETR AM/FM stereo with seek up/down and auto-reverse cassette (UN6)	A	S	-
Delco ETR AM/FM stereo with seek up/down, compact disc player, graphic equalizer and digital clock (UP3)	A	A	S
Delco ETR AM/FM stereo with compact disc player, auto-reverse cassette, 7-band graphic equalizer and clock (includes 6-speaker sound system with high-mounted tweeters) (UN1)	A	A	A
High-performance 6-speaker sound system with high-mounted tweeters (available with UP3 radio and included with UN1 sound system) (UQ3)	A	A	S
Safety belts:	S	S	S
Adjustable shoulder safety belt guide loops (Sedans only)	S	S	S
Safety belts, 3-point	S	S	S
Rear-seat lap and shoulder, all outboard positions	S	S	S
Rear-seat child comfort guides, all outboard positions	S	S	S
Seats, front: 45/45 bucket seats, reclining	S	S	S
Easy entry front passenger (Coupes only)	S	S	S
Driver's, 4-way manual with power height adjustment	-	S	S

Features (continued)	SE Coupe and Sedan		
	SE	SE1	SE2
Driver's power, 6-way	-	-	A
Sport Interior Group (AS5) (order by trim code) includes Redondo/Patina cloth or leather seating areas, along with leather-wrapped steering wheel and shift knob, reading and courtesy lamps, visor extensions, uplevel seat design, manual driver lumbar adjustment, rear seatback pockets and trunk cargo net	-	-	S
Rear: Three-passenger with integrated headrests	S	S	S
Split-folding	-	S	S
Spoke wheels:			
Sport, four-spoke	S	S	-
Sport, four-spoke, leather-wrapped with radio controls	-	-	S
Tilt-Wheel adjustable steering column	S	S	S
Upper front center armrest	S	S	S
Front door map pockets	S	S	S
Glove compartment	S	S	S
Power windows, power glass	-	A	A

Always wear safety belts, even in vehicles equipped with air bags.

MECHANICAL

Delco Freedom with rundown protection	S	S	S
Power disc/drum	S	S	S
Anti-lock braking system (ABS), 4-wheel	S	S	S
Transmission shift interlock safety feature	S	S	S
California/Massachusetts/New York/Connecticut/New Jersey/Rhode Island emissions requirements	A	A	A
Engine block heater	A	A	A
Engines/Transmissions: 2.4 liter Twin-Cam 16-valve 4-cylinder with electronically controlled 4-speed automatic	S	S	A
3.4 liter 3400 SFI V6 with electronically controlled 4-speed automatic	-	A	S
Electronic Traction System (ETS)	S	S	S
Paint system, stainless steel	S	S	S
Galvanized anti-corrosion protection featuring two-sided galvanized steel body panels	S	S	S
Front-wheel drive	S	S	S
Lock theft-deterrent system	S	S	S
Steering, power rack-and-pinion	S	S	S
Brakes, 4-wheel independent	S	S	S

Standard. A = Available. - = Not available.

ENGINES

	2.4 liter Twin-Cam	3.4 liter 3400 SFI V6
Power	S	-
	S	A
	A	S
Power	150 @ 5,600 rpm	170 @ 5,200 rpm
	155 ft-lbs @ 4,400 rpm	195 ft-lbs @ 4,000 rpm
Electronic automatic with Enhanced Traction System (ETS)	S	S

SPECIFICATIONS

Engine/drive	Front engine, front-wheel drive
Curb weight	3,066 lbs. (Est.)
Fuel tank capacity	15.2 gallons

DIMENSIONS

		Coupe	Sedan
Interior	Head room, f/r	38.3/37.2"	38.3/37.6"
	Leg room (front)	43.1"	42.1"
	Shoulder room, f/r	53.7/55.0"	53.6/52.8"
	Hip room (front)	52.4"	52.6"
	Trunk capacity	14.3 cu. ft.	14.3 cu. ft.
Exterior	Wheelbase	106.7"	106.7"
	Overall length	186.3"	186.3"
	Width	70.4"	70.4"
	Overall height	55.1"	55.1"
	Tread, f/r	59.0/59.1"	59.0/59.1"

OPTION GROUPS

Some available options may require additional equipment. See your dealer for details.

	Grand Am SE		
	SE	SE1	SE2
C60 Air conditioning, custom	S	S	S
N33 Tilt-Wheel adjustable steering column	S	S	S
CD4 Controlled-cycle windshield wipers	S	S	S
C49 Defogger, electric rear window	S	S	S
MX0 Transmission, 4-speed automatic	S	S	S
AU3 Door locks, power, automatic	S	S	S
UM7 Radio, ETR AM/FM stereo	■		
UN6 Radio, ETR AM/FM stereo with auto-reverse cassette		■	
UP3 Radio, ETR AM/FM stereo with compact disc player and 6-speaker sound system			■
K34 Cruise control		■	■
A31 Power windows with driver's "express-down" feature		■	■
DG7 Power mirrors, Sport, LH and RH (black)		■	■
AH3 Driver's seat, 4-way manual/power height adjustment		■	■
AM9 Split-folding rear seat		■	■
UK3 Steering wheel radio controls			■
UQ3 High-performance speaker system			■
AU0 Remote keyless entry			■

■ = Included in Option Group. S = Standard.

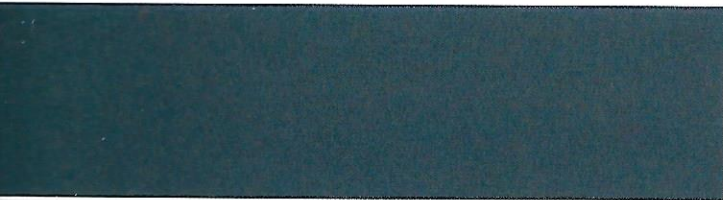
Colors:

EXTERIOR COLORS

Arctic White



Silvermist Metallic



Medium Blue Metallic



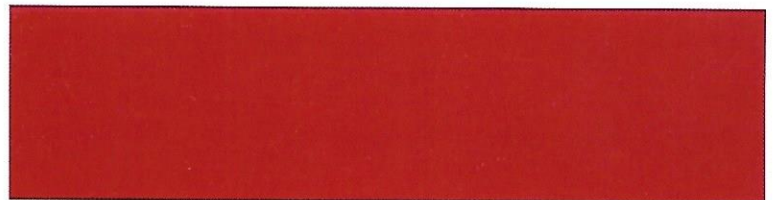
Medium Green-Blue Metallic



41 Black



60 Topaz Gold Metallic



81 Bright Red



89 Medium Purple Metallic

These panels represent the premium DuPont exterior colors available on Grand Ams for 1999.

Grand Am SE Coupe shown in Bright Red.

